



# TAI-SAW TECHNOLOGY CO., LTD.

No. 3, Industrial 2nd Rd., Ping-Chen Industrial District,  
Taoyuan, 324, Taiwan, R.O.C.

TEL: 886-3-4690038 FAX: 886-3-4697532

E-mail: [tstsales@mail.taisaw.com](mailto:tstsales@mail.taisaw.com) Web: [www.taisaw.com](http://www.taisaw.com)

## Product Specifications Approval Sheet

Product Name: 974.3 MHz 76MHz BW SMD 5.0 x 5.0 mm SAW IF Filter

TST Parts No.: TB1030A

Customer Parts No.: \_\_\_\_\_

Customer signature required
Company: _____
Division: _____
Approved by : _____
Date: _____

Checked by: \_\_\_\_\_ Kazuma Lee 

Approval by: \_\_\_\_\_ Francis Chen 

Date: \_\_\_\_\_ 10 / 06 / 2011

1. Customer signed back is required before TST can proceed with sample build and receive orders.
2. Orders received without customer signed back will be regarded as agreement on the specifications.
3. Any specifications changes must be approved upon by both parties and a new revision of specifications shall be released to reflect the changes.



# TAI-SAW TECHNOLOGY CO., LTD.

No.3, Industrial 2nd Rd., Ping-Chen Industrial District, Taoyuan, Taiwan, R.O.C.

TEL: 886-3-4690038 FAX: 886-3-4697532

E-mail: [tstsales3@mail.taisaw.com](mailto:tstsales3@mail.taisaw.com) Web: [www.taisaw.com](http://www.taisaw.com)

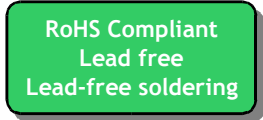
SAW Filter 974.3MHz 76MHz BW (SMD 5.0×5.0 mm)

MODEL NO.: TB01030A

REV. NO.1

## A. MAXIMUM RATING:

1. Operating temperature range: -30°C to 60°C
2. Storage temperature range: -40°C to 85°C
3. Input Power Level : 10 dBm
4. Maximum DC Voltage : 10V



Electrostatic Sensitive Device

## B. Characteristics :

Item	Unit	Min.	Type.	Max.
Center frequency, Fc	MHz	-	974.3	-
Insertion Loss, IL	dB	-	15.5	16.5
-1dB bandwidth	MHz	76	84	-
Passband Ripple Fc+/- 35MHz	dB	-	0.7	1.0
Attenuation:(Reference level from Min IL)				
10MHz ~ 904.3MHz	dB	40	45	-
904.3MHz ~ 915MHz	dB	32	36	-
1034MHz ~ 1044.3MHz	dB	32	37	-
1044.3MHz ~ 1200MHz	dB	37	41	-
Temperature Coefficient	ppm/°C	-	-94	-
Source Impedance	Ohm	-	50	-
Load Impedance	Ohm	-	50	-

### C. Frequency Characteristics :

(1) Wide band Response:(span 400MHz)

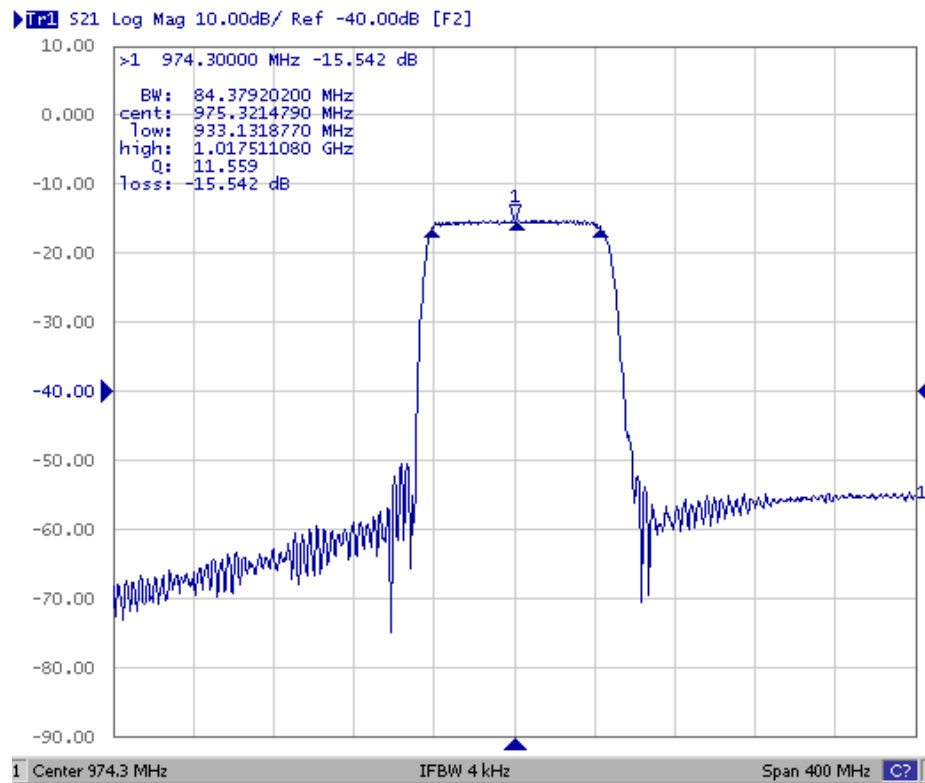


Fig1. Horizontal: 40MHz/Div Vertical: 10dB/Div

(2) Pass band Response and Group Time Delay response:

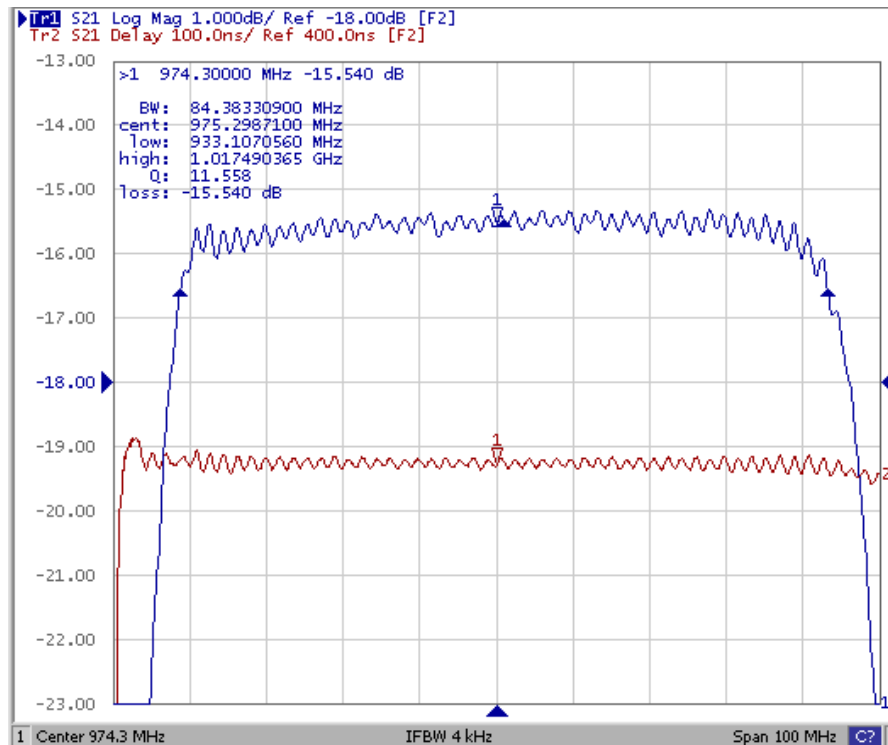
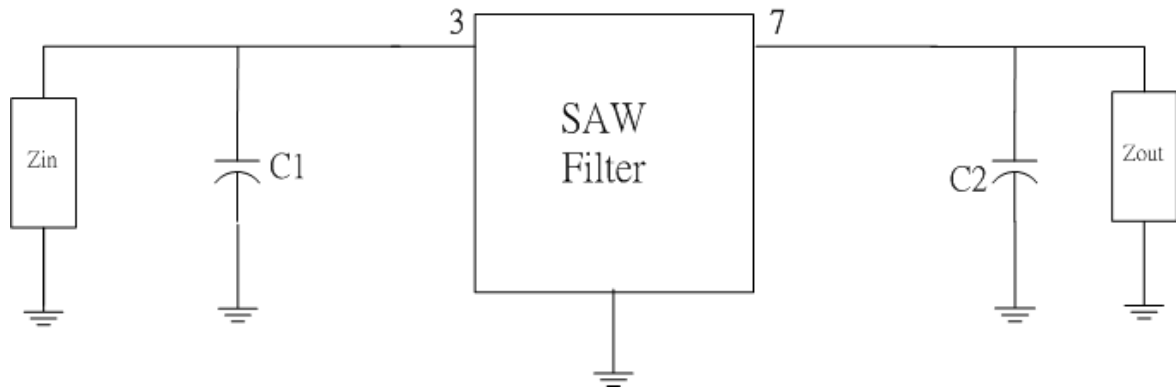


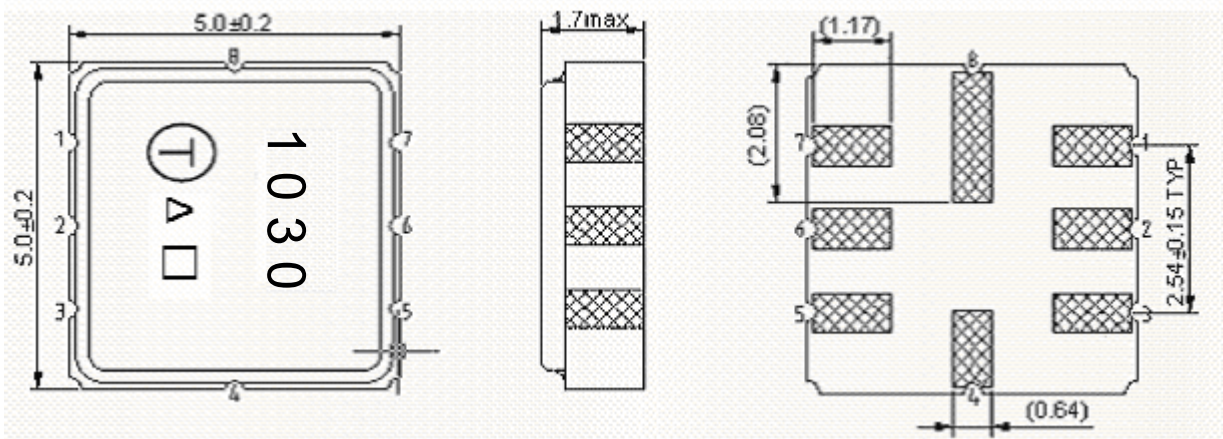
Fig2. Horizontal: 10MHz/Div Vertical: 1dB/Div  
Vertical: 100ns/Div

**D. Matching Circuit:**



C1 = 2.7 pF C1 = 6.8 pF

**E. Outline Drawing:**



#3 –Input

#2 –Input ground

#7 – Output

#6 – Output ground

#1,4,5,8 – Ground

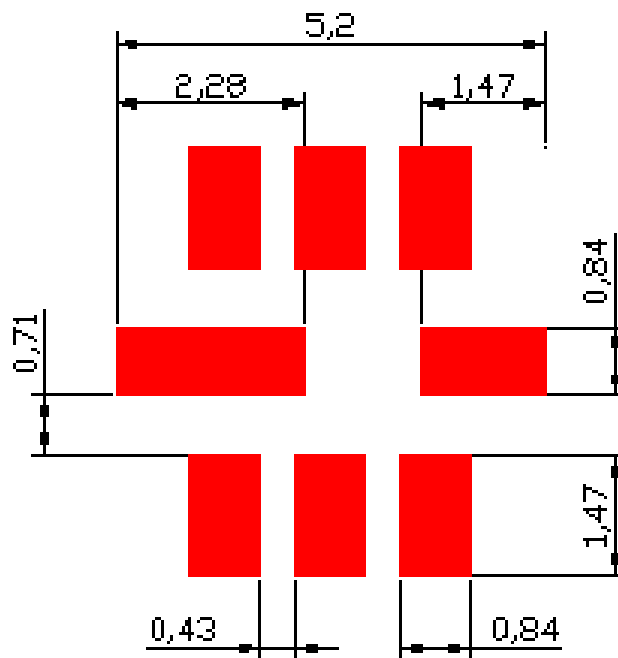
□ : Week Code (Follow the table from planner each year)

Unit : mm

△ : Product / Year Code

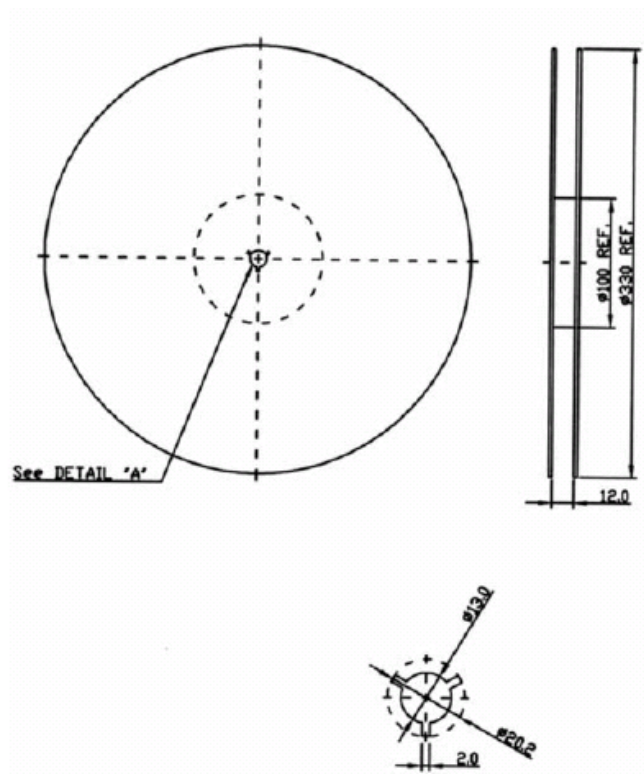
Year	2005 2009	2006 2010	2007 2011	2008 2012
Product Code	B	b	<u>B</u>	<u>b</u>

F. PCB Footprint:

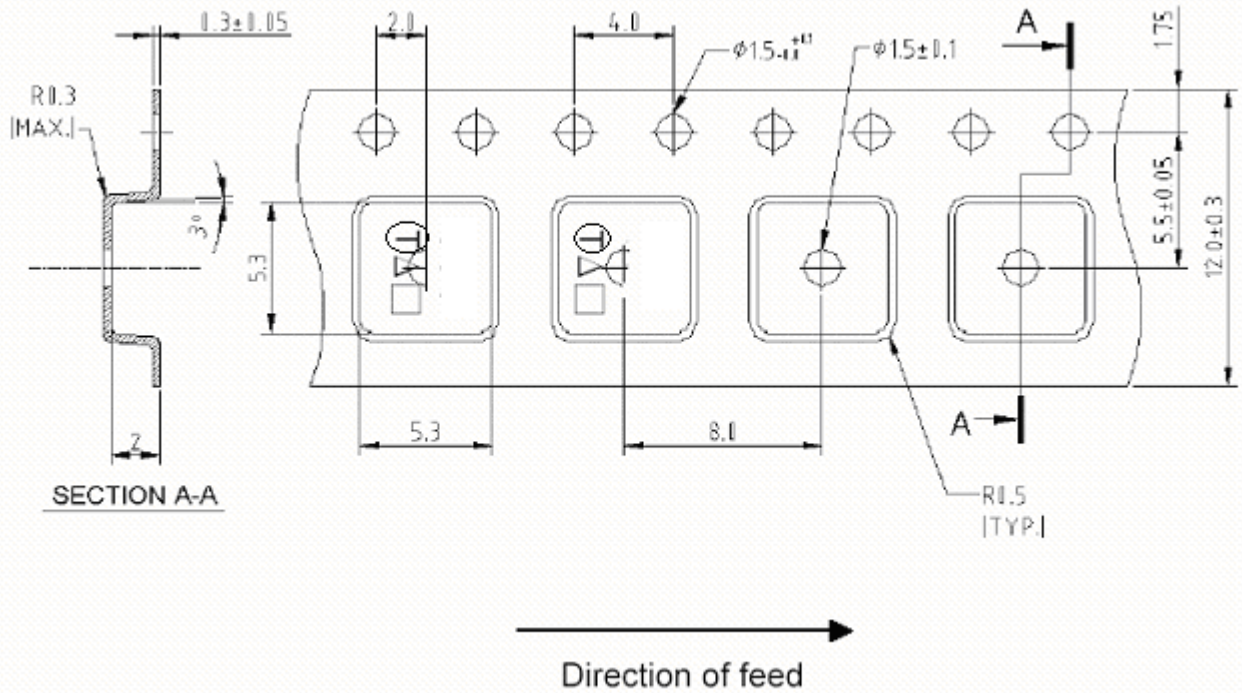


G. PACKING:

1. REEL DIMENSION:



2. TAPE DIMENSION:



H. RECOMMENDED REFLOW PROFILE:

